

Brochure

Aspen Connect™



What Is Aspen Connect?

Aspen Connect lets you integrate industrial data across existing historians with cloud-ready solutions to achieve maximum performance, security, deployment and flexibility. It is purpose-built for IoT technology, industrial devices, wireless sensors and MES systems, enabling efficient and secure data integration that breaks data silos. Aspen Connect moves industrial data in real time, which provides you with a holistic view of your entire operation.



“Leaders are seizing the opportunity to use data science to drive profit and business sustainability. Aspen Connect enables industrial organizations to obtain ROI by using data to drive asset optimization and reach high and sustained levels of operational excellence.”

– Keith Flynn, Senior Director, Product Management, Aspen Technology, Inc.

Aspen Connect is Part of the Aspen AIoT Hub™

The Aspen AIoT Hub provides the integrated data management, cloud-ready infrastructure and production-grade AI environment to build, deploy and host Industrial AI applications at enterprise speed and scale.

Data Integration and Mobility

Access fully integrated data from multiple historians and industrial IoT devices across the enterprise and move it to the edge and cloud.

Cloud-Ready Infrastructure

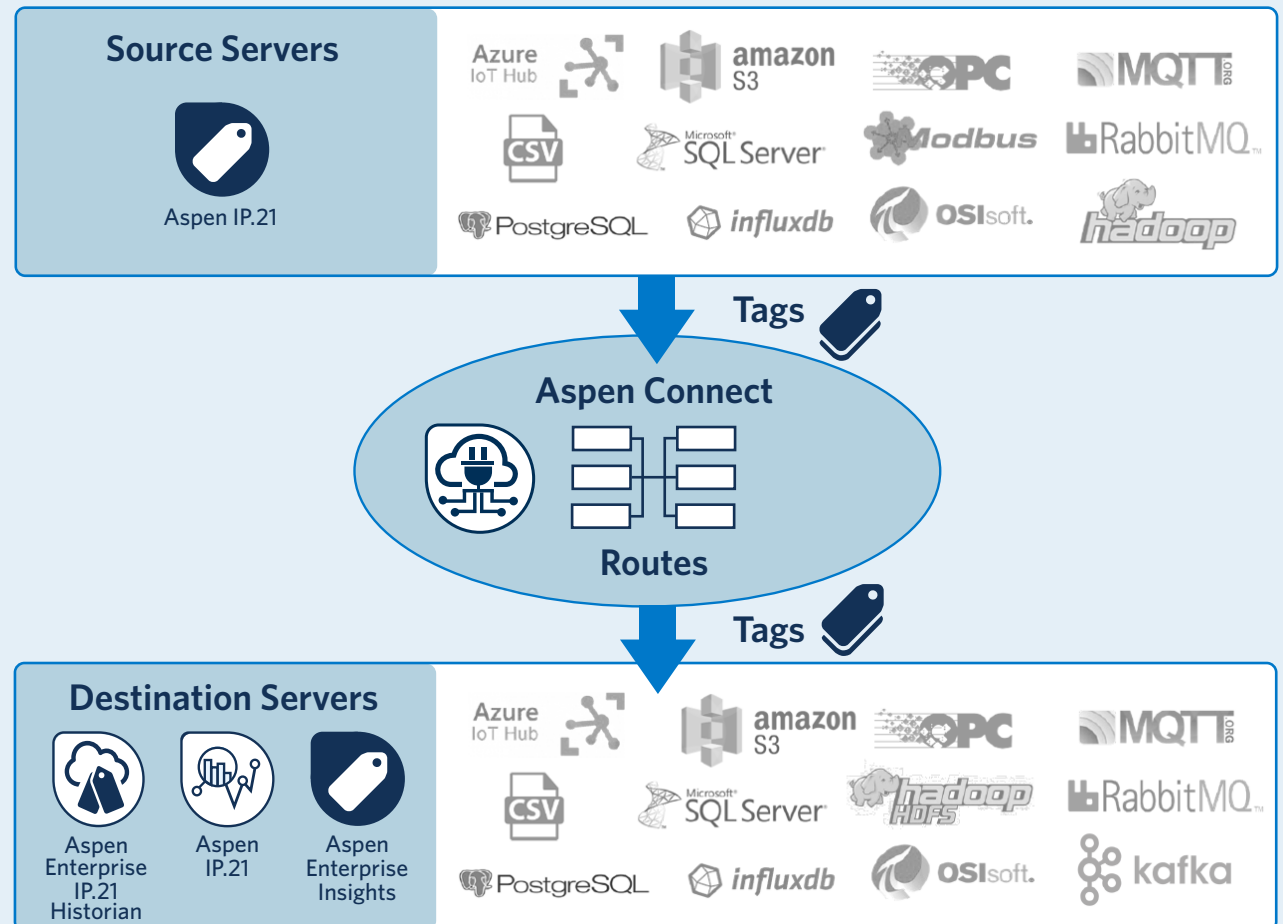
Realize the vision for the Self-Optimized Plant on the cloud. Ingest and aggregate data at a large scale and process and store billions of data points.

Enterprise-Wide Visualization

Examine and benchmark KPIs that correlate with accelerated insights to ensure your machine learning models and workflows continue to perform well over time.

A Powerful Data Connectivity Solution Built for Enterprises

Aspen Connect equips enterprises with the ability to read from, and write to, a wide variety of data sources, databases and historians with an easy and quick configuration. It moves historical data or streams live data with native Aspen IP.21 connectivity for encrypted high-speed data transfers; provides out-of-the-box connectivity for OSIsoft, SQL Server, CSV files, OPC UA, etc., and premium connectivity for stream processing, data lakes, and cloud providers for big data analytics and reporting purposes (see the graphic below).





Be Connected, Be Informed, Be Efficient

Gain Full Visibility of Your Data

Maintain end-to-end visibility by collecting data from every device and moving it to the cloud.

- Manage large volumes of data into a conditioned, usable format.
- Use a variety of communication protocols and write data to other enterprise systems, such as historians, data lakes and cloud data storage.
- Achieve maximum performance, security and deployment flexibility for stranded data.

Scale Up and Out

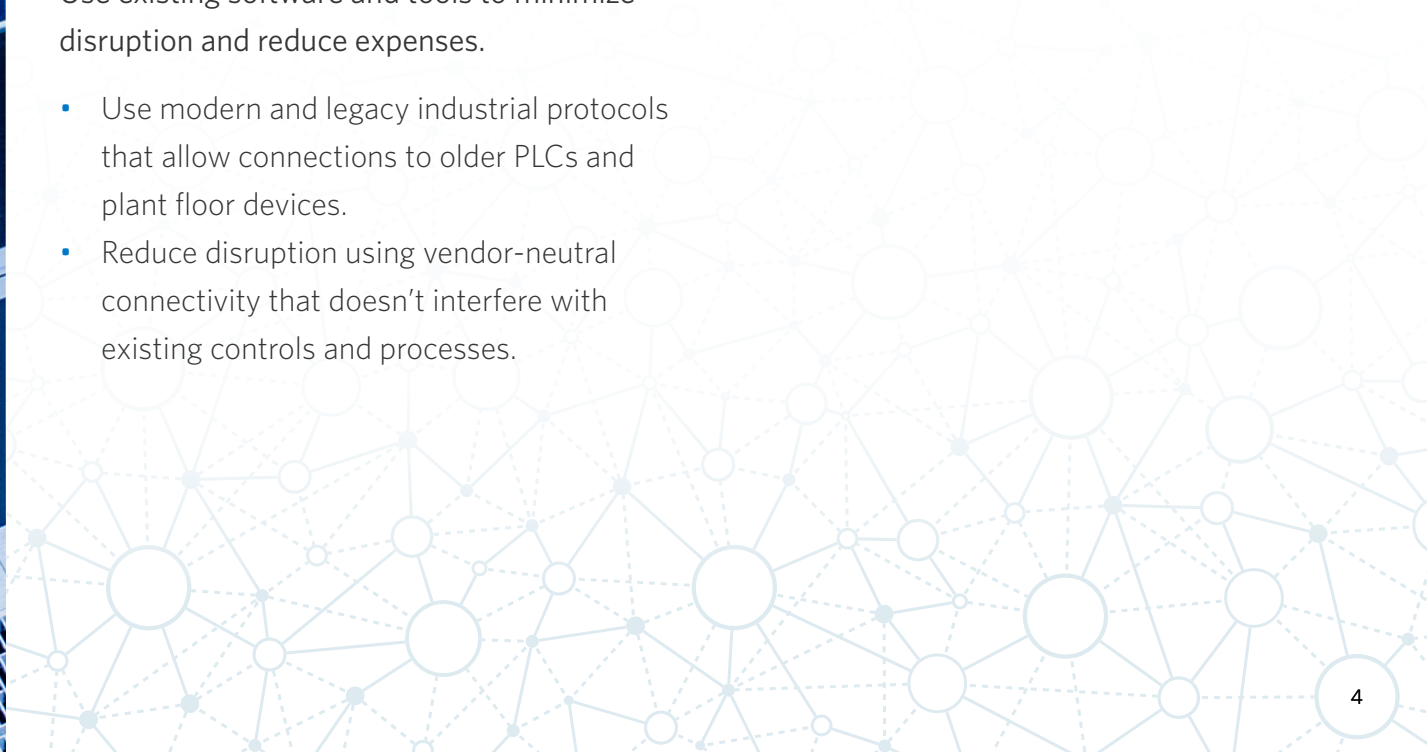
Leverage the flexibility of the cloud to create efficiencies and easily scale your business.

- Use native Aspen IP.21 connectivity for encrypted, high-speed data transfers.
- Accommodate more data and devices by leveraging the flexibility of the cloud while alleviating strain on the network.
- Leverage historical data, enabling machine learning agents to be trained and deployed immediately in the cloud or on-premises.

Leverage Your Existing Systems

Use existing software and tools to minimize disruption and reduce expenses.

- Use modern and legacy industrial protocols that allow connections to older PLCs and plant floor devices.
- Reduce disruption using vendor-neutral connectivity that doesn't interfere with existing controls and processes.



Why Aspen Connect?

Aspen Connect enables companies to push the limits of performance and run assets safer, greener, longer and faster. AspenTech is working with customers to extend optimization's reach through the combination of process modeling expertise, advanced analytics and machine learning.

- Flexible connectivity purposebuilt for AspenTech products, but supports other protocols, historians, data lakes and cloud providers
- Performance and security to transfer data from edge to cloud
- Embedded toolkit for improved workflows and bulk tag management

Key Benefits

- Achieve maximum performance, security, and deployment flexibility for stranded data
- Migrate large volumes of data into a conditioned, usable format
- Leverage existing MES investment
- Integrate with vendor-neutral, out-of-the-box connectivity
- Utilize existing systems and avoid replacements during deployment
- Connect using modern and legacy industrial protocols to older PLCs and new modern plant floor devices
- Use native Aspen IP.21 connectivity for encrypted high-speed data transfers
- Scale up and out to accommodate more data and devices
- Alleviate strain on network

About Aspen Technology

Aspen Technology, Inc. (NASDAQ: AZPN) is a global software leader helping industries at the forefront of the world's dual challenge meet the increasing demand for resources from a rapidly growing population in a profitable and sustainable manner. AspenTech solutions address complex environments where it is critical to optimize the asset design, operation and maintenance lifecycle. Through our unique combination of deep domain expertise and innovation, customers in capital-intensive industries can run their assets safer, greener, longer and faster to improve their operational excellence.

[aspentech.com](https://www.aspentech.com)

© 2022 Aspen Technology, Inc. All rights reserved. AT-08040

